

제6회 **SKEC** 영어글쓰기대회

Seoul National University of Education - Korea Herald English Contest (Writing)

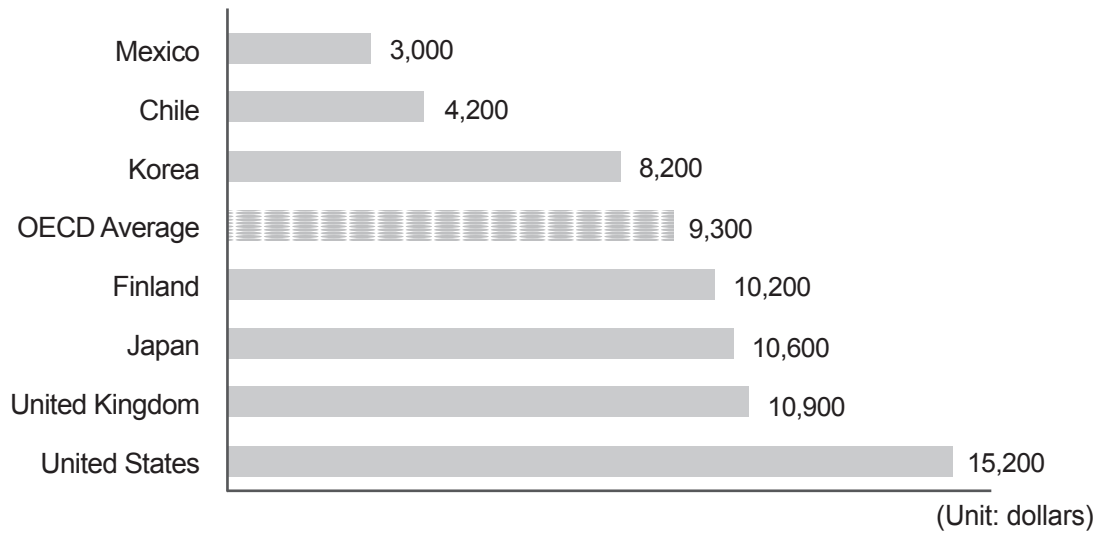
성명		수험번호	
----	--	------	--

## High School

### DOMESTIC LEVEL

1. Write a 200-word description of the chart below which gives information about annual public expenditure per student. Include the information given in your writing by selecting the main features and making comparisons. (30 points)

**Annual Public Expenditure per Student  
From Primary Through Tertiary Education in 2010**



\* tertiary: post-secondary education which is the educational level following secondary education, such as university and college

CONTINUE



제6회 **SKEC** 영어글쓰기대회

Seoul National University of Education - Korea Herald English Contest (Writing)


성명		수험번호	
----	--	------	--

## High School


### INTERNATIONAL LEVEL

1. Write a 200-word description of the chart below which gives information about South Korea's dependence on imported food. Include the information given in your writing by selecting the main features and making comparisons. (30 points)

**Cases of Imports to South Korea in 2011**

No.	Country	Case (number of cases)	Rate(%)
1	China	92,955	29.7
2	USA	48,798	15.6
3	Japan	36,090	11.5
4	France	13,538	4.3
5	Italy	12,304	3.9
...			

**Dollar Amount of Imports to South Korea in 2011**

No.	Country	Amount (million US dollars)	Rate(%)
1	USA	2,734	20.7
2	China	2,683	20.3
3	Australia	1,082	8.2
4	Thailand	651	4.9
5	Brazil	571	4.3
...			

 **CONTINUE**



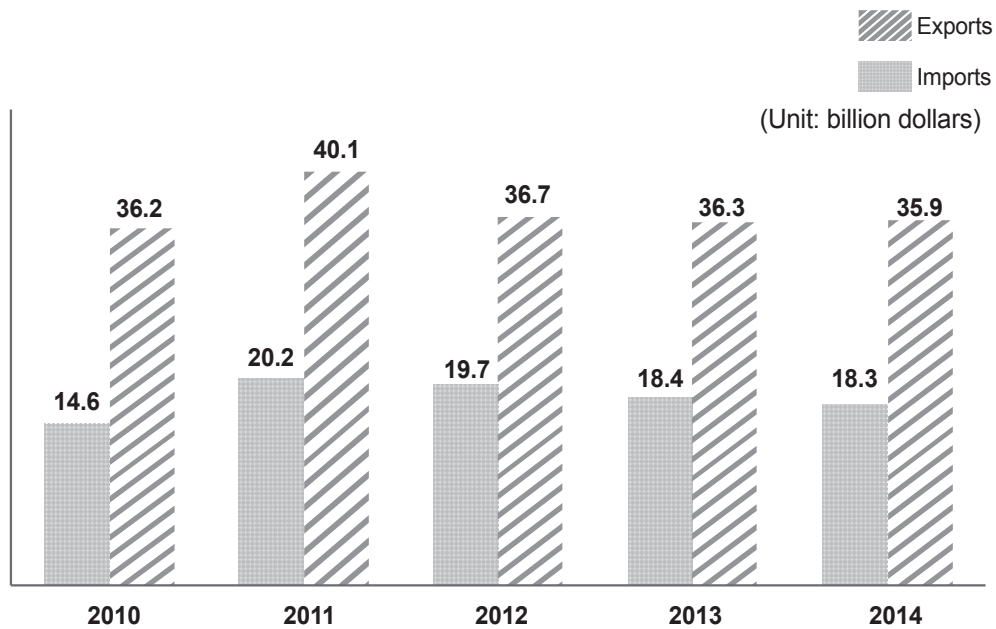
성명		수험번호	
----	--	------	--

## Middle School

### DOMESTIC LEVEL

1. The chart below shows the amount of South Korea's trade (both exports and imports) with Central and South American countries from 2010 to 2014. Summarize the information in the graph in about 100 words by reporting the main features and making comparisons. (30 points)

South Korea's Trade with Central and South America



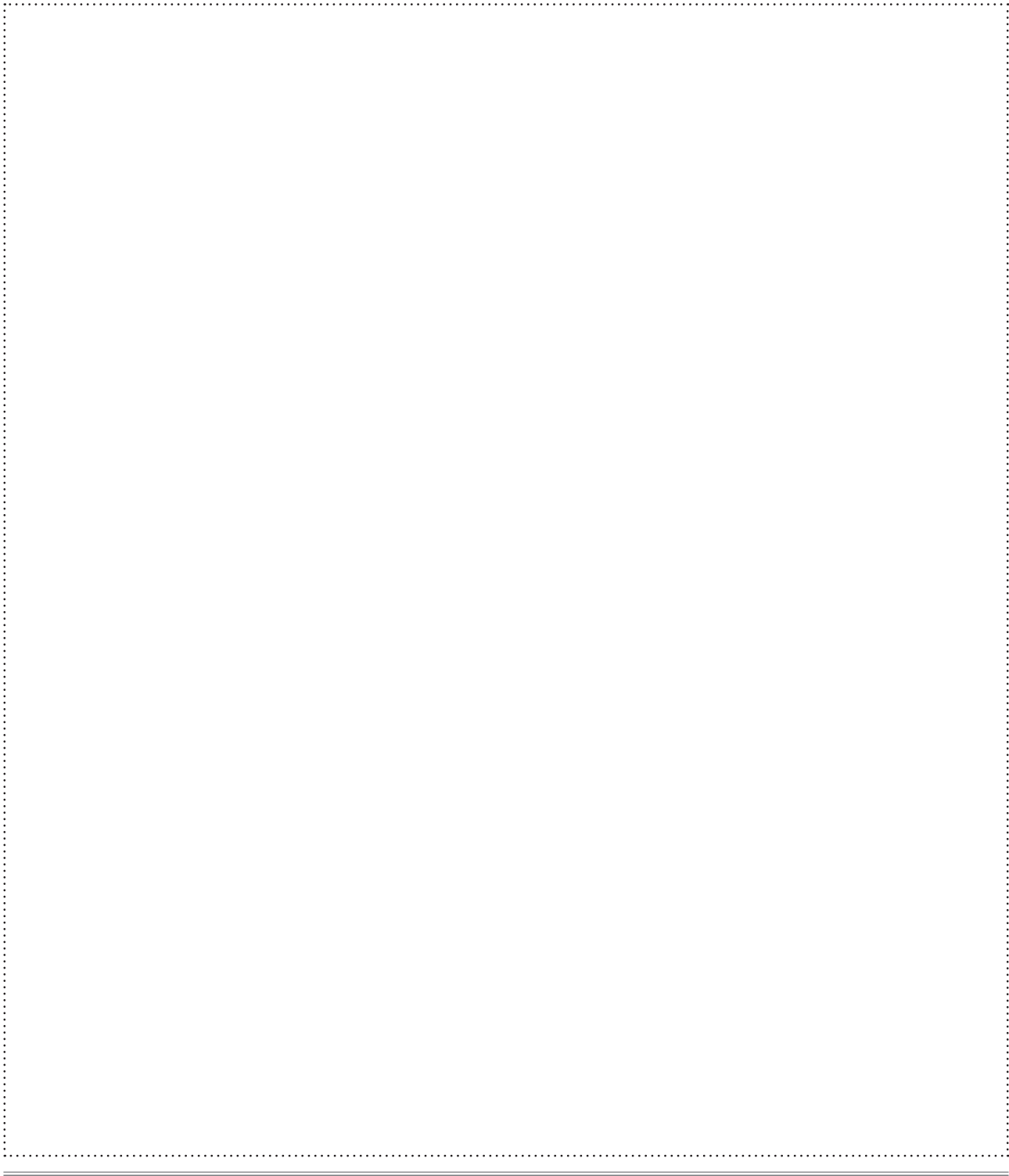
CONTINUE

2. Write your opinion about the following topic in about 300 words. Use specific reasons and examples to support your opinion. (70 points)

There are multiple aspects to consider when you go on vacation. In particular, it is important to decide whether you will participate in a group tour where the itinerary has been already set or you will plan your own trip. Some people prefer to travel in a group led by a tour guide. Others prefer to travel by themselves. Which do you prefer?

---

---



제6회 **SKEC** 영어글쓰기대회

Seoul National University of Education - Korea Herald English Contest (Writing)

성명		수험번호	
----	--	------	--

## Middle School

### INTERNATIONAL LEVEL

1. The table below shows survey results about the amount of sleep respondents in three countries got on workday nights. Summarize the information in the table in about 100 words by reporting the main features and making comparisons. (30 points)

**Hours of Sleep on Workdays**

	USA	Germany	Japan
Less than 6 hours	21%	10%	19%
6 hours to less than 8 hours	58%	62%	71%
8 hours or more	21%	28%	10%
Average hours slept	6h 31m	7h 1m	6h 22m

 **CONTINUE**

2. Write your opinion about the following topic in about 300 words. Use specific reasons and examples to support your opinion. (70 points)

There are various ways to enjoy a sporting event. You can visit the venue where the sporting event takes place. You can also watch the sporting event on TV, a smart phone, a tablet PC, or another electronic or digital device. With this in mind, do you agree or disagree with the following statement?

Attending a live sporting event is more enjoyable than watching a sporting event on TV or on a digital device.

A large rectangular area enclosed by a dotted line, intended for writing the response to the prompt.



제6회 **SKEC** 영어글쓰기대회

Seoul National University of Education - Korea Herald English Contest (Writing)

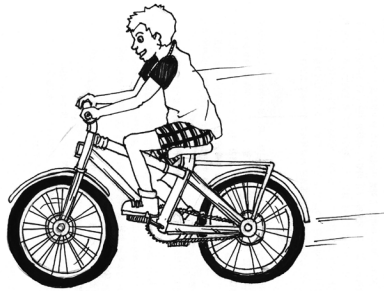
성명	수험번호
----	------

**Elementary School (Lower Grades)**

**DOMESTIC LEVEL**

1. Complete each sentence that can correctly describe the picture. (30 points)

(1)



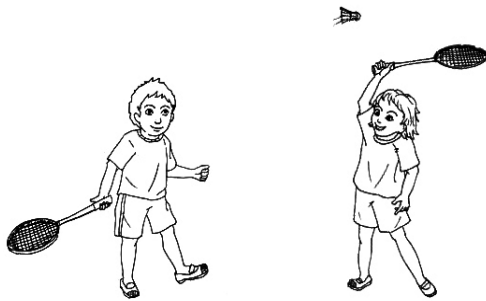
He \_\_\_\_\_ well.

(2)



I am \_\_\_\_\_ you.

(3)



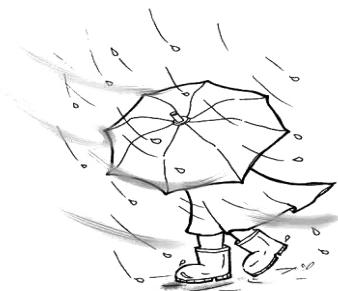
Yesterday I \_\_\_\_\_ friend.

(4)



There \_\_\_\_\_ the tree.

(5)



It is \_\_\_\_\_ and \_\_\_\_\_.

(6)



I \_\_\_\_\_ every day.

CONTINUE



제6회 **SKEC** 영어글쓰기대회

Seoul National University of Education - Korea Herald English Contest (Writing)

성명		수험번호	
----	--	------	--

**Elementary School (Upper Grades)**

**DOMESTIC LEVEL**

1. Complete each sentence that can correctly describe the picture. (30 points)

(1)



The bookstore is \_\_\_\_\_.

(2)



I want \_\_\_\_\_ the future.

(3)



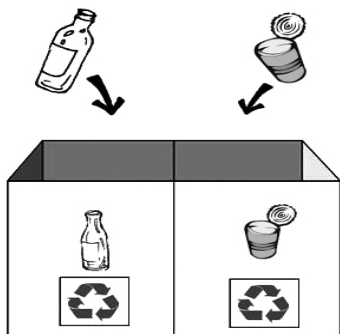
I like to \_\_\_\_\_.

(4)



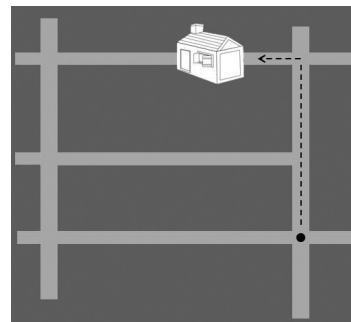
What a \_\_\_\_\_ is!

(5)



You should \_\_\_\_\_ and \_\_\_\_\_.

(6)



Go straight \_\_\_\_\_ and \_\_\_\_\_.

CONTINUE



제6회 **SKEC** 영어글쓰기대회

Seoul National University of Education - Korea Herald English Contest (Writing)

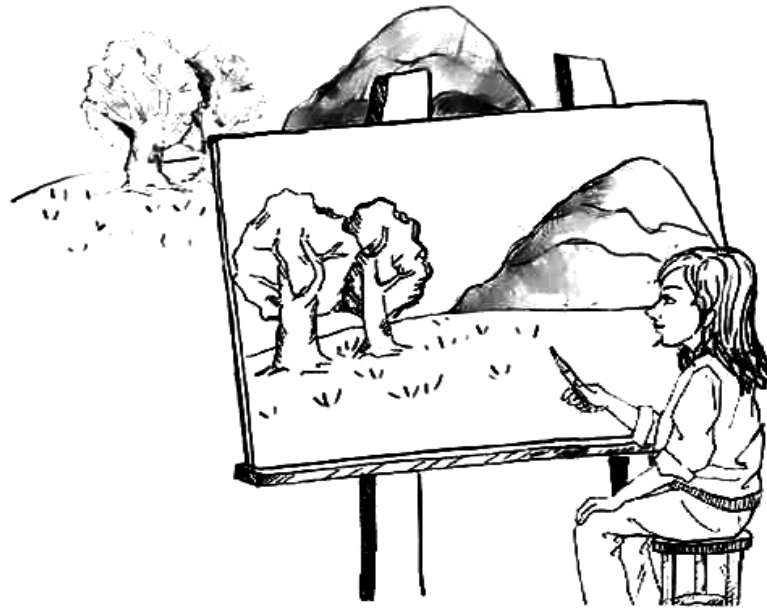
성 명

수험번호

**Elementary School (Lower Grades)**

**INTERNATIONAL LEVEL**

1. Write a paragraph to describe the following picture, using about 50 words. (30 points)



 **CONTINUE**



제6회 **SKEC** 영어글쓰기대회

Seoul National University of Education - Korea Herald English Contest (Writing)



성명		수험번호	
----	--	------	--

**Elementary School (Upper Grades)**

**INTERNATIONAL LEVEL**

1. Write a paragraph to describe the following table, using about 50 words. (30 points)

**Weekend Weather in Seoul**

	Saturday	Sunday
		
High	18°C	20°C
Low	10°C	14°C

 **CONTINUE**

